

Department of Geography
Hong Kong Baptist University

BSocSc (Hons) in Geography

Handbook 2024-25





Contents

HKBU GEOG at a glance

About Us

Major in Geography

- Graduation Requirements
- Study Areas
- Major Required Courses
- Major Elective Courses
- General Education Courses
- Social Sciences Common Core
- Study Schedule

Field Camps & Field Trips

Overseas Exchange

Internship Opportunities

Scholarships

Laboratories & Facilities

Faculty Members

Academic Advising

Career Prospects

Admissions Requirements



HKBU GEOG at a glance

40+ years of history

10+ Overseas & local field trips every year

10+ Full-time academic & teaching staff from renowned universities

7 Laboratories & Facilities

4 Research Clusters in Urban Studies, Physical Dynamics, Energy and Geoanalytics

3 Study Programmes

- 1 UG Programme
- 2 RPg Programmes

3 Research Centres housed within the Department



About Us

Geography distinguishes itself by its integrated approach to studying the interactions between people and physical and social environments.

Our curriculum gives students rigorous training in geographical methodologies while fostering an understanding of the spatial order and interdependence of the world's peoples and regions. It also promotes the application of relevant geographical concepts, techniques and transferable skills to solve real-world issues.



**Building Theories
and Practices**



**Promoting Scholarly
Interactions**



**Achieving Academic
Excellence**

Study Programmes

Undergraduate

- BSocSc (Hons) in Geography
(Broad-based Admission from JS2610)

Research Postgraduate

- M.Phil in Geography
- Ph.D in Geography

Major in Geography

BSSc GEOG is structured so that students can either choose to undertake well-rounded training or specialize in certain geographical sub-fields at later stages of their study, in line with its synthesizing tradition.

Students are offered considerable freedom to take a broad spectrum of courses, particularly in their third and final years, when they may choose to concentrate on aspects of either physical or human geography.



Aims & Objectives

BSSc GEOG provides students with:

- Broad-based training to develop a balanced view of the contemporary world.
- A firm foundation in geographical methodologies
- Knowledge of the spatial order & interdependence of the world's peoples and regions
- Transferable skills to pursue diverse careers and further studies

Graduation Requirements

Major Programme Requirement

For graduation, students are required to complete 128 units, including the following courses.

University Core (13 units)

University English (6 units),
University Chinese (3 units),
Healthy Lifestyle (2 units), and
The Art of Persuasion (2 units)



General Education Courses (18 units)

Level 1 Foundational Courses (9 units): Three courses in (i) History and Civilization, (ii) Values and the Meaning of Life, and (iii) Quantitative Reasoning

Level 2 Interdisciplinary Thematic Courses (6 units):

Any two courses in (i) Science, Technology and Society, (ii) Sustainable Communities, and (iii) Culture, Creativity and Innovation

Level 3 GE Capstone (3 units): One course or Independent Study in either (i) Interdisciplinary GE Capstone Course or (ii) Interdisciplinary Independent Study

3

Social Sciences Common Core (4 units)

Common Core Course (1 unit) and
Experiential Learning in Action (3 units)

4

Major Required Courses (30 units)

Core Courses (24 units), Field Camp (0 unit)
and Honours Project (6 units)

5

Major Elective Courses (33 units)

Students must take at least one course from each study area:
(1) Geoanalytics and Research Practice, (2) Physical Systems and
Environmental Dynamics, (3) Urban Studies, Cities and Everyday Life,
and (4) Regions, Development and Resource Management

Free Elective Courses (30 units)

Minor Programme Requirement

Students are required to complete 15 units of courses specified by the Department, among which at least two Level 2 Elective courses and at least two Level 3/4 Elective courses.

Study Areas



1

1) Geoanalytics and Research Practice

In a rapidly changing global world, our geoanalytical methods transform spatial data into information for human wellbeing.



2

2) Physical Systems and Environmental Dynamics

Our common sustainable future depends on how we understand and manage environmental changes that occur in all spatial and temporal time scales.



3

3) Urban Studies, Cities and Everyday Life

A wide range of sub-disciplinary topics in urban, economic, cultural, social and transport geography is covered to study the spatial characteristics of the human world.



4

4) Regions, Development and Resource Management

The tension between sustainable development and resource management, in regions that experience rapid economic growth, is central to this study area.

Major Required Courses

(3 units each)

Year 1

GEOG1005 Geography and the Contemporary World

Year 2

GEOG2005 Cultures, Peoples and Landscapes

GEOG2006 Earth Systems: Shaping Landscapes

GEOG2007 Introduction to Quantitative Methods in
Geography

GEOG2015 Maps and Map Making

GEOG2016 Earth Systems: Atmosphere and Biosphere

GEOG2017 Globalization of Economic Activities

Year 3

GEOG3005 Field Camp (0 unit)

GEOG3006 Regional Geography of China

Year 4

GEOG4898 Honours Project

GEOG4899 Honours Project

Major Elective Courses

(3 units each)

A) Geoanalytics & Research Practice

GEOG3036	Writing Spatial Stories through Qualitative Research
GEOG4006	Advanced Quantitative Methods in Geography
GEOG4017	Geographical Information Systems
GEOG4025	Geographical Imaginations
GEOG4046	Remote Sensing and Image Interpretation

B) Physical Systems & Environmental Dynamics

GEOG3015	Geography of Health and the Environment
GEOG3017	Global Environmental Issues and Sustainability
GEOG4005	Advanced Climatology
GEOG4015	Coastal Environments and Processes
GEOG4027	Geography of Environmental Hazards
GEOG4057	Selected Topics in the Geography of China (Physical & Environmental Geography)
GEOG4066	Seminar in Environmental Planning and Management
GEOG4096	Biogeography
GEOG4097	Ecosystems and Processes



Major Elective Courses

(3 units each)

C) Urban Studies, Cities & Everyday Life

GEOG3025	Population Geography
GEOG3027	Urban Geography
GEOG4035	Geography of Transportation
GEOG4056	Selected Topics in the Geography of China (Human Geography)
GEOG4076	Urban Cultural Landscape
GEOG4085	Urban Development in China
GEOG4086	Urban and Environmental Planning

D) Regions, Development and Resource Management

GEOG2025	Hong Kong and the Pearl River Delta: A Survey
GEOG3007	Energy Problems and the Environment
GEOG3016	Geography of Pacific Asia
GEOG3037	Environmental Health and Policy
GEOG4016	Sustainable Energy and Technological Innovation in China
GEOG4026	Geography of Economic Development
GEOG4036	Political Geography
GEOG4047	Resource and Environmental Management in China
GEOG4055	Rural and Agricultural Development in China
GEOG4065	Energy Policy and Analysis
GEOG4087	Natural Resource Evaluation and Policy Approaches

GE Courses

Level 2 Interdisciplinary Thematic Course – Sustainable Communities

GTSU2056 People and the Environment

Emphasis is placed on equipping students with a comprehensive understanding of human-environment interaction and a critical perspective to understand human beings in environmental change and the ensuing impacts on society as feedback. It facilitates students to become responsible citizens to develop sustainable communities.



Level 3 GE Capstone

GCAP3026 Developing Interdisciplinary Field Studies for Environmental or Social Issues

This experiential learning course will help students identify pressing global issues through field activities and propose actions with our local and international partners by utilizing our field experiences.

Course highlights:

- Storytelling skills
- Problem-solving and
- organizational skills
- Fieldwork experience



GE Courses

Level 3 GE Capstone

GCAP3027 GE Capstone Interdisciplinary Independent Study of Environmental or Social Issues

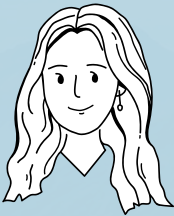
This independent study course will guide students to explore interdisciplinary solutions for environmental or social issues through field studies.

Course highlights:

- Leadership qualities to plan field activities
- Creativity to propose actions for real-world issues

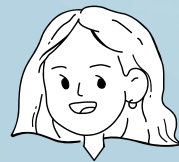


Student Sharing



Jasmine Li

Overall GCAP3027 enabled me to develop a deeper understanding of fieldwork and analytical techniques. The instructor guided me throughout the investigation and analysis processes. It was *FUN* and *NEW* for me to relate the course knowledge with reality. This is necessary for my study and the experience itself is quite different from other courses.



Ophelia Liu

Taking GCAP3027 is an unforgettable part of my u-life. I not only learnt many hard knowledge but also developed soft skills such as communication, teamwork and leadership qualities.

Social Sciences Common Core

Undergraduate students under the Faculty of Social Sciences (SOSC) have to complete a total of 4 units requirement of Social Sciences Common Core (SSCC) to strengthen their identity as SOSC students and develop in them a solid conceptual understanding of the transdisciplinary nature of social sciences.

Common Core Course (1 unit)

SOSC1006 Invitation to Social Sciences

This course, to be taken in Year 1 study, encompasses three parts: i) What is social science?; ii) How to conduct social science research?; and, iii) Social Sciences at HKBU. It will offer a broad understanding of the nature, basic principles, methodologies, and developments of social sciences to new students.

Experiential Learning in Action (ELA) (3 units)

SOSC students have to take either one of the following courses in Year 3 or 4 study.

SOSC3005 Community and Civic Engagement

Students may choose to engage in either internship or student research attachment which is normally of at least 5 consecutive weeks' full-time attachment during the summer or a minimum of 200 work hours during term time (or equivalent). This provides students with off-campus learning experiences, explores their career interests, and develops job-required attributes for future career planning.

Social Sciences Common Core

SOSC3006 Global Outreach

Students need to engage in 4+ weeks (or equivalent) of non-local learning activity, spending roughly 6 hours per day (30 hours per week) and the total workload may include time spent on voluntary work, community projects, fieldwork, service programme and other attachments abroad.

Remarks: Students should pay attention to the email announcements from SOSC and apply for SOSC3005 or SOSC3006 in the previous semester of the course offering semester.



Double-counting Arrangements

Students who major in BSSc GEOG or minor in GEOG may choose to take GCAP3026 or GCAP3027 to fulfil the requirements of ELA and GE Capstone.

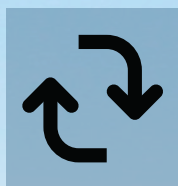
Programme	Eligible GE Capstone	Double-counted towards	Replacement course
BSSc GEOG	GCAP3026/ GCAP3027	SOSC3005/ SOSC3006	Any Major Elective Courses
Minor in GEOG		A Minor Elective course (Level 3/4)	Nil

Social Sciences Common Core

Application Procedures for Double-Counting



Step 1: Students have to take either GCAP3026 or GCAP3027 and pass the course.



Step 2: Geography Major students also have to take a Major Elective course (3 units) as a replacement course to make up the outstanding 3 units.



Step 3: In the final year of study, students who completed GCAP3026/GCAP3027 may apply to the Academic Registry for double-counting the course towards either SOSC3005 or SOSC3006 to fulfil the ELA requirement.

(Please stay tuned to the email announcement from the Academic Registry.)

Remarks:

Students who major or minor in Geography can only take GCAP3026 or GCAP3027 to double count towards SOSC3005 or SOSC3006. Other GE Capstone(s) taken will not apply to the above double-counting arrangements.

Level 3 GE Capstone cannot be counted as free electives.

Study Schedule

BSocSc (Hons) in Geography (4-year curriculum)

Study Year: 1, Semester 1	
SOSC 1006 Invitation to Social Sciences	1.00
University English I	3.00
University Chinese	3.00
University Life	0.00
Writing Enhancement Course	0.00
<i>(students who have not obtained Level 4 or above in the HKDSE "English Language" are required to take this course)</i>	
Free Elective Courses	6.00
History and Civilization	3.00
Term Total	16.00

Study Year: 1, Semester 2	
University English II	3.00
Free Elective Courses	9.00
Values and the Meaning of Life	3.00
Term Total	15.00

Study Year: 2, Semester 1	
<i>GEOG 2005 Cultures, Peoples and Landscapes</i>	3.00
<i>GEOG 2006 Earth Systems: Shaping Landscapes</i>	3.00
<i>GEOG 2007 Introduction to Quantitative Methods in Geography</i>	3.00
<i>GEOG 1005 Geography and the Contemporary World</i>	3.00
Quantitative Reasoning	3.00
Healthy Lifestyle	2.00
Term Total	17.00

Study Year: 2, Semester 2	
<i>GEOG 2015 Maps and Map Making</i>	3.00
<i>GEOG 2016 Earth Systems: Atmosphere and Biosphere</i>	3.00
<i>GEOG 2017 Globalization of Economic Activities</i>	3.00
Major Elective Courses	6.00
<i>The Art of Persuasion</i>	2.00
Term Total	17.00

Students are advised to take *GEOG1005 Geography and the Contemporary World* in Year 1 in case they will pursue Geography in Year 2.

Study Schedule

Study Year: 3, Semester 1

Free Elective Courses 12.00



Overseas Exchange?

Term Total 12.00

Study Year: 3, Semester 1

<i>GEOG 3005 Field Camp</i>	0.00
<i>GEOG 3006 Regional Geography of China</i>	3.00
Major Elective Course	3.00
GE Capstone	3.00
Interdisciplinary Thematic Courses	6.00
Social Sciences Experiential Learning in Action	3.00

Term Total 18.00

Study Year: 4, Semester 1

<i>GEOG 4898 Honours Project</i>	3.00
<i>Free Elective Course</i>	3.00
Major Elective Courses	12.00

Term Total 18.00

Study Year: 4, Semester 1

<i>GEOG 4899 Honours Project</i>	3.00
Major Elective Courses	12.00

Term Total 15.00



Students are advised to exchange in semester 1, Year 3 (one-semester off-campus period).

Students must complete two Interdisciplinary Thematic Courses (Level 2) before taking the GE Capstone (Level 3).

Field Camps & Field Trips



Local and regional course-based field trips are held to supplement classroom teaching and learning.

In addition, a mandatory **Field Camp (GEOG3005)** of around 6 to 9 days is organized for Year 3 students in the second semester every year. There is a wide range of possible locations and previous Field Camps have been organized in Australia, Mainland China, Taiwan, Southeast Asia, and the United States. It aims to strengthen students' observational and hands-on skills, offer an invaluable learning experience, and foster student-staff interactions.



Overseas Exchange



Currently, about 10% of our undergraduate students are engaged in overseas exchange studies in a wide range of exchange partner institutions. Geography students are strongly recommended to have exchange experience which would be life-changing and conducive to developing transferable skills. Our students have been to the following institutions from 2014 to 2023:



Overseas Exchange

Asia

Akita International University
Ewha Womans University
Feng Chia University
Hanyang University
Kazakhstan Institute of Management, Economics and Strategic Research
Keimyung University
Nagasaki University
Nanyang Technological University
National Central University
National Chengchi University
National Chiao Tung University
Seinan Gakuin University
Sogang University
Soochow University
Waseda University
Wuhan University

Americas

Carroll University
Dalhousie University
Kalamazoo University
Queen's University
Northern Arizona University
Samford University
Simon Fraser University
Stetson University
Trent University
University at Albany, State University of New York
University of North Carolina Wilmington
University of Saskatchewan
West Virginia University
Western Michigan University

Australasia

Queensland University of Technology
University of Canberra
University of Western Sydney
University of Wollongong

Europe

Aberystwyth University
Halmstad University
Karol Adamecki University of Economics in Katowice
Keele University
Kristianstad University
Leibniz Universitat Hannover
Linkoping University
Linnaeus University
Masaryk University
National University of Ireland Maynooth
Sciences Po Paris
Swansea University
Tilburg University
Universidad de Navarra
University of Bergen
University of Birmingham
University of Eastern Finland
University of Jyvaskyla
University of Klagenfurt
University of Leeds
University of Navarra
University of Tartu
University of Turku
University of Wales Trinity Saint David
VU University Amsterdam

Internship Opportunities

Our students have been actively involved in internship programmes offered by various organizations to develop transferable skills and a sense for life-long learning. Such skills are keenly sought by prospective employers and make our graduates highly employable.

Our students have participated in the following organizations in the past five years:

Asia Society Hong Kong Center
Asian Energy Studies Centre (AESC), Hong Kong Baptist University
CarbonCare InnoLab Limited
Centre for Geo-computation Studies, Hong Kong Baptist University
David C. Lam Institute for East-West Studies, Hong Kong Baptist University
Fair Trade Hong Kong
Greenpeace East Asia
Happy-Retired Company Limited
Hong Kong Committee for UNICEF
Hong Kong Pearl Cultivation Association Ltd.
Hong Kong Wetland Park of Agriculture, Fisheries and Conservation Department, HKSAR
Hong Kong Women Workers' Association
Leisure and Cultural Services Department (Projects and Development Section, Heritage and Museums Division)
MINT Asia Ltd
Music Office, Leisure and Cultural Services Development
Rooftop Republic Urban Farming
Society for the Welfare of the Autistic Persons
Super Clean Agricultural Technology International Limited
Walk in Hong Kong Limited
World Green Organization
World Vision Hong Kong
World Wide Fund for Nature Hong Kong (WWF-HK)

Scholarships

Every year a substantial number of scholarships are credited to geography students to honour their outstanding academic achievements and notable service contributions and to support students with physical disabilities or financial difficulties. Scholarships that bestow to geography students include:



- The Royal Geographical Society (with IBG) Hong Kong Dissertation Scholarship
- Mrs. Leung Tong Pom-Sum Memorial Scholarship
- Luk Yin Memorial Fund
- Paul C K Wong Memorial Fund*
- Wong May Wai Esther Scholarship for Outstanding Geography Students
- Hong Kong Electric Scholarships for Energy and Environmental Studies

*For geography UG students who are physically challenged with a good academic profile

Laboratories & Facilities

The Department provides a wide range of laboratory facilities, equipment and other support for high-quality teaching and research.

Geoinformatics Laboratory



- GIS, remote sensing and statistical analysis package for hands-on practicals and faculty research

Physical Geography Laboratory



- All-purpose student lab with diverse equipment

Sediment Laboratory



- Small lab that houses thin sectioning and sieve equipment

Environmental Laboratory



- Standard laboratory facilities designed for student work

Geosciences Laboratory



- Standard laboratory facilities for advanced studies in physical geography

Human Geography Research Laboratory



- Computing facilities for purposes of research projects

Geographic Resource Centre/ Map Library



- Geographic Resources for students in the Department

Faculty Members

The research interests of faculty members encompass the following four research clusters.

Urban & Regional Studies

Energy, Sustainability & Resource Management



Physical Landscape & Environmental Change

Geoanalytics, GIS & Remote Sensing

Research in the Department covers a broad range of topics in human geography, physical geography, and environmental science. Our faculty members have a good track record in securing research grants from diverse sources, including the General Research Fund (GRF) administered by the Research Grant Council, the Public Policy Research (PPR) fund administered by the Central Policy Unit, and research grants from the National Science Foundation of China (NSFC).



Faculty Members

Urban & Regional Studies

A variety of social, transportation, housing and other urban and regional themes, mainly dealing with contemporary China and Hong Kong.



Prof. Wang Donggen

Transport Geography,
Time Geography,
Geography of Wellbeing



Prof. Yang Chun

Economic Geography,
Urban & Regional
Development,
China & Southeast Asia



Dr. Hao Pu

Urban Geography,
Urban China Studies,
Urban Housing,
Migration, Mobility



Dr. Anna Lee

Governance,
Urban Planning,
Heritage Conservation,
Sustainable Development,
Environmental Protection
& Management

Energy, Sustainability & Resource Management

Research into sustainable development, environmental impacts of energy, and natural and social science aspects of environmental and resource management issues.



Dr. Daphne Mah

Sustainable Energy,
Governance for Energy
Transitions, Comparative
Energy Studies in Asia



Dr. Guo Meiyu*

Unconventional Gas
Development, Energy
Policy, Environmental
Impact Assessment,
Environmental Economics,
Carbon Market, ESG Study



Dr. Kevin Lo

Environmental Politics,
Environmental Governance,
Political Geography,
Urban Geography, China

Faculty Members

Physical Landscape & Environmental Change

Research into past and contemporary climate and environmental change, mainly in China and Hong Kong.



Prof. Gao Meng

Air Quality, Atmospheric Chemistry Modelling, Climate Change Mitigation



Dr. Muhammad Sajjad

Climate Change Impacts, Natural Hazards, Risk-Resilience-Sustainability Nexus



Dr. Sakai Shoko

Plant Ecology, Social-ecological Systems, Plant-insect interactions, Invasive Species, Biodiversity, Biogeography



Dr. Lyu Xiaopu*

Emerging air pollution under low carbon transition, Atmospheric reactive organics & secondary products, Air quality & human health

Geoanalytics, GIS & Remote Sensing

Research regarding the development and application of analytical tools involving big data, GIS, GPS and Remote Sensing.



Prof. Wang Donggen

Data Analytics in Urban Studies, Transport Studies, Activity-travel Behavior



Dr. Guo Yingqi*

Smart Society, Environment & Wellbeing, GIS/GPS/RS, Mixed Methods



Dr. Muhammad Sajjad*

GIS & Remote Sensing, Spatial Data Analysis, Geospatial Applications for Smart Decisions and Resource Allocation



Dr. Song Jun*

Activity-travel Behaviour, Transport and Time Geography, Air Pollution Modelling, AI and Blockchain, Urban Digital Twins

Academic Advising

Each student will be assigned an academic staff as his/her Academic Advisor. Students are strongly recommended to meet with their advisors at least once per semester for academic advice (such as study plans, exchange and internship opportunities, career planning, etc.)

Student Advising Team (SAT)

SAT in the Department of Geography provides academic and general support to students and assists them to adapt to u-life, and provides advice on choosing a suitable Major.

Academic Advising events include information evenings, hiking excursions, cultural tours, film screenings, field trips, career talks, etc.



SAT members

Dr. Daphne Mah
daphnemah@hkbu.edu.hk

Dr. Song Jun
junsong@hkbu.edu.hk

Dr. Hao Pu
ppuhao@hkbu.edu.hk

Miss Joanne Leung
joanneleung@hkbu.edu.hk

Specific Coordinators

Student Counselor (Exchange, Internship & Scholarships):

Dr. Guo Meiyu

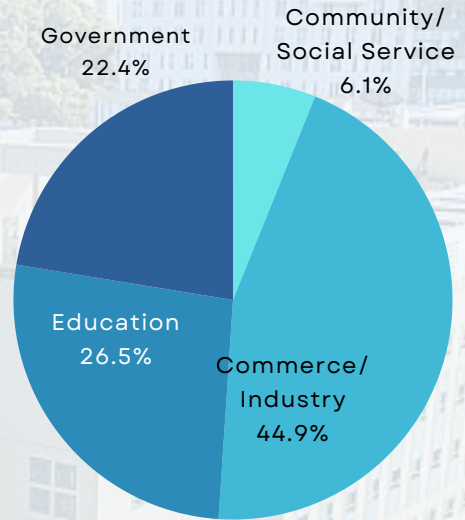
Advisor for Senior-year Entrants:

Dr. Daphne Mah

Career Prospects

The geography curriculum equips students with a wide variety of transferable skills and a sense of life-long learning, especially through fieldwork and the honours project. Our graduates are highly employable and keenly sought by employers in previous years.

In recent years, a considerable number of our graduates practised in various sectors, including teaching/lecturing, administration, management, and scientific and research work.



Private & Public Sector

*Business services,
Government
departments*



Education

*Geography Teaching
in schools*



Professionals

*Environmental &
urban planning,
transport planning*



Academics

*Postgraduate studies
in pursuit of a career
as academics*

Alumni Sharing



*Ms. Helen Chan
Director (Operations), Hong Kong Post*

Geography major provided me with not only academic knowledge but also logical thinking, analytic power and strong leadership.



*Mr. Eddie Chan
Senior Director (E-commerce), Walmart China*

Geography enabled me to look into spatial variation between various spaces and the environment and offered me a unique opportunity to learn things by adopting a holistic approach.



*Ms. Kami Hui
Conservation Manager, Arborist*

Geography training enabled me to deal with nature conservation and I would like to inspire more people to care about nature through conservation education.



*Mr. Kevin Lee
Manager (School Programme), Hong Kong Jockey Club Disaster Preparedness and Response Institute*

Geography trained my critical thinking and inspired me to address issues from a global and innovative perspective. Always be kind, curious and well-prepared for new challenges!

Admissions Requirements

Students who are interested in BSocSc (Hons) in Geography will be considered for a joint admission to BA/BSocSc (JS2610). A broad-based social sciences training will be provided in the first year of study. Before progressing to Year 2, students will choose their Majors via an internal application.

- Geography
- European Studies [French/German Stream]
- Global & China Studies
- Government & International Studies
- History
- Sociology



Programme Requirements (JS2610)

Core Subject(s)

	<u>Minimum Level</u>
Chinese Language	3
English Language	3
Citizenship & Social Development	Attained
Mathematics Compulsory Part	2

Elective Subject(s)

Any 2 Subjects#

Minimum Level

3

#Notes:

1. One of the electives must be any Category A subjects including Extended Part of Mathematics (Module 1 or Module 2);
2. The other elective can be any of the following subjects:
 - a) Category A subjects;
 - b) Other Language subjects at Grade E or above.
3. Applied Learning subjects will be considered in the admissions selection process.



Department of Geography Hong Kong Baptist University

12/F, Academic and Administration Building,
15 Baptist University Road,
Kowloon Tong,
Hong Kong

Tel: (852) 3411-7129

Email: geog@hkbu.edu.hk

Instagram: [@hkbugeog](https://www.instagram.com/hkbugeog)

Website: <https://geog.hkbu.edu.hk/>

Last Update: April 2024